



**LLEDÓ**  
ENERGÍA

**Kromatix™**  
by swissnso 

## FOTOVOLTAICA DE INTEGRACIÓN ARQUITECTÓNICA



---

### DATASHEET LK190/4+4

Swiss premium quality

100% EL Testing

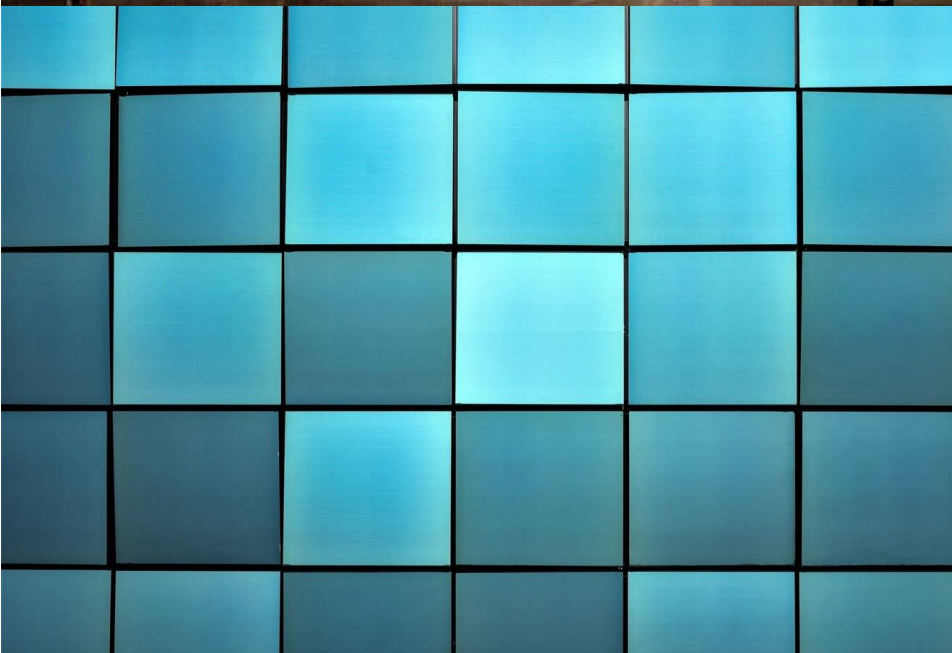
Power tolerance 0/+5W







PID test passed

IEC EN 61215

IEC EN 61730-1/2

Warranty  
12y manufacturing defects  
12y 90% output power



							
<b>Electrical characteristics</b>		<b>Grey</b>	<b>Blue-Green</b>	<b>Blue</b>	<b>Terra</b>	<b>Gold</b>	<b>Bronze</b>
<b>Peak power (P<sub>MPP</sub>)</b>	<b>W</b>	<b>190</b>	<b>185</b>	<b>190</b>	<b>190</b>	<b>185</b>	<b>185</b>
Short circuit current (I <sub>SC</sub> )	A	9,60	9,55	9,61	9,61	9,43	9,43
Open circuit voltage (V <sub>OC</sub> )	V	25,31	25,31	25,31	25,31	25,31	25,31
Rated current (I <sub>MPP</sub> )	A	9,15	9,10	9,16	9,16	9,04	9,04
Rated voltage (V <sub>MPP</sub> )	V	20,77	20,77	20,77	20,77	20,77	20,77
Peak power (P <sub>MPP</sub> )	W/m <sup>2</sup>	182	177	182	182	177	177
Efficiency	%	18,2%	17,7%	18,2%	18,2%	17,7%	17,7%
Peak power tolerance	W	0/+5	0/+5	0/+5	0/+5	0/+5	0/+5

STC: 1.000W/m<sup>2</sup>, 25C, AM1,5

#### Operating conditions

Temperature range	C	-40 / 85
Max. system voltage	V	1.000
Max. series fuse rating	V	15
Limiting reverse current	A	15
Max. surface load capacity	Pa	2.400 / 5.400
Resistance against hail		25 mm ø, 23 m/s

#### Thermal characteristics

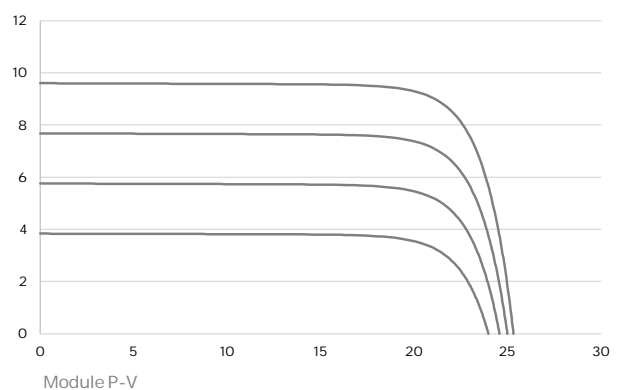
Temperature coefficient P <sub>MPP</sub>	%/C	-0,42
Temperature coefficient I <sub>SC</sub>	%/C	0,05
Temperature coefficient V <sub>OC</sub>	%/C	-0,33

#### Mechanical data

Dimensions	mm	1490 x 700 x 8
Weight	kg	21
Solar cells		monocrystalline Si 36 cells
Cells encapsulation		Ethylene vinyl acetate (EVA)
Front		Tempered solar glass 4 mm KROMATIX
Back		Heat strengthened glass 4 mm
Frame		Frameless
Junction box		IP67 with 3 Bypass diodes
Cable and connectors		4 mm <sup>2</sup> , 1.000 mm length

l (cm)	w (cm)	A (m <sup>2</sup> )	Cells	Wp	Wp/m <sup>2</sup>
165	70	1,16	40	210	184
165	54	0,89	30	155	178
165	38	0,63	20	105	169
165	86	1,42	50	265	187
165	102	1,68	60	315	189
149	70	1,04	36	190	183
133	70	0,93	32	165	182
117	70	0,82	28	145	181
101	70	0,71	24	125	180
85	70	0,60	20	105	178
69	70	0,48	16	80	176
181	70	1,27	44	230	184
197	70	1,38	48	250	184
203	100	2,00	72	345	173

Standard modules



\*Specifications may be changed without notice

2020/11/11